

Where Playtime Meets Progress

Wraparound Care

More than just childcare



Progressivesports®

CELEBRATING 10 YEARS

2015 - 2025

There's another way to deliver wrap around care

Providing wraparound care to most schools presents many challenges

With nearly 20 years of experience in schools, we've witnessed both the positive and the less favorable aspects, driving our desire to create something that enhances the existing situation.

In fact, many school wraparound programs could use improvement.

They frequently lack engaging activities and energy for the children. Often, they are perceived as just childcare.

For wraparounds managed by schools, it's essential to recognise that they will never be the primary focus, nor should they be.

Did you know?

80%

of UK primary schools currently manage wrap around in-house?

Learn how St Joseph's RC Primary transformed their program - with immediate results

Scan Here!



Our Wrap Around

Every child is distinct, and we honor this individuality through our inclusive and enriching approach, which prioritises the child's needs in all our decision-making processes.



1

Active Kids Zone

Children will get the opportunity to be active and take part in loads of different sports and physical activities.



2

Wellness Kids Zone

Children will have an area that they can relax and have some quiet time and be free to be themselves.



3

Discovery Kids Zone

Child led play where the children learn through play and express their interests and build friendships.



4

Creative Kids Zone

Children can explore their creative side through a range of activities; like art, crafts, role play, music, drama and more.

Why Choose Us...

TRUSTED PARTNER

We've over 20 years of experience in education and 40 partner primary schools we support, plus we're an operator of Ofsted registered holiday camps. Our proven model allows you to enjoy peace of mind and reduced administrative burdens while receiving high- quality wraparound care. So you can guarantee you're in safe hands.



EXPERTS IN PHYSICAL ACTIVITY & WELLBEING

Our staff is PESSPA-certified and trained in Mental Health First Aid (MHFA), ensuring children receive safe, engaging physical activity that aligns with WHO guidelines of 60 minutes of daily physical activity. Whether you seek to establish wraparound care or enhance your current provision, our expertise ensures a vibrant and safe environment for your school.



HOLIDAY CAMPS

For your pupils, we offer fun and activities all year round, not just during term time.

We are also a provider of the HAF programme in the East Midlands.

Serving over 3,000 children during the summer with an impressive feedback rating of 9.7 out of 10, our camps offer year-round excitement and educational experiences, ensuring children thrive beyond term time limitations.



REVENUE SHARE

Putting pennies back into the budget. Whether this is through hire charges for the wrap around care, or, offering a number of free spaces for pupil premium children, it's a partnership for us to develop together for the best interests of your children and your school.



Insights from Headteachers...

“ We are extremely impressed with the professionalism of the staff working in the school. Following their appearance on the BBC, I was interested in learning more about them. They have seamlessly integrated themselves into our school family, promoting the school's behaviour policy and values.

Progressive Sports has been an invaluable partner in enhancing our wraparound care offerings.

Their programs seamlessly align with our educational philosophy while injecting fresh energy and inspiration. The positive impact has been remarkable, from improved pupil engagement to glowing parental feedback. I would highly recommend Progressive Sports to any school seeking to enhance its extracurricular experiences. We look forward to working together for many more years to come

David Jobburns,
Head at St Joseph's RC Primary



What We Stand For...

Progressive Sports is one of the UK's leading providers of physical education and exists to inspire, engage and encourage children to lead an active and healthy lifestyle.



To achieve this, we champion the four core values of safety, pride, care and performance, which are at the heart of our business.



Enriching Young Minds & Extending the School Day



Principles In Practice

-  20+ years of education expertise
-  Ofsted-registered across the UK
-  Partnerships with 40 local schools
-  35,000 children kept active weekly
-  These metrics aren't just numbers; they're a testament to our commitment to enriching young lives and forming lasting bonds with the communities we serve.



We're educators at heart. Our team isn't just filling time, they're igniting curiosity, building confidence, and making every child feel valued. It's why we get 75,000 kids active every single week.

Adam Holland
Founder & CEO,
Progressive Sports East Mids



What Parents Have To Say



“ My son loves going and the staff are great. Everyday my son asks if he is going to the club. Even at weekends! ”

Coton in the Elms Primary

“ My daughter loves going to after school club and really likes the staff, Happy child, Happy mum! ”

Shelton Junior School

“ My son loves club which makes life easier for me as a parent! ”

Parkview Primary

“ The feedback I get from my children about the care they receive from your staff is super amazing. They always look forward to going. ”

Parkview Primary

“ Staff are really amazing , caring and highly supportive of the children. ”

Shelton Junior School

The Progressive Way . . .



To build a thriving wraparound service that parents trust and the school is proud to recommend.



To use our expertise in physical activity and wellbeing to create a wraparound service that promotes all the benefits of being active and healthy.



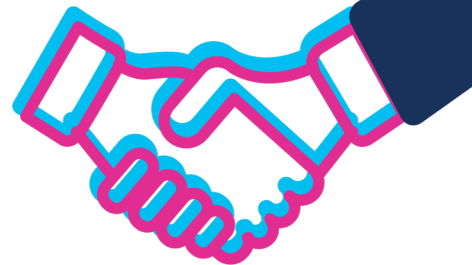
To provide a breadth of activities that are inclusive and ensure children want to keep coming back.



Provide a service that extends the school day with educational and enriching activities that means the school is a hub of community activity.



Every child is unique and we want to celebrate this by providing an enriching, inclusive experience that provides every child with a safe, caring, active and happy environment for them to be themselves.



Create a partnership model with the school to ensure its WIN-WIN for everyone.

Progress Starts Here

Step 1:

Schedule Your Meeting.

Book a personalised meeting to explore how Progressive Sports can:

- Add funds back to your school budget
- Deliver an affordable service for parents
- Reduce your staff admin and delivery time
- Active and healthy kids!
- We welcome your valued team, ensuring job security and offering upskilling programs through a seamless transition under TUPE regulations.

Step 2:

Receive Your Bespoke Proposal.

We'll analyse your school's needs and craft a tailored plan showcasing the financial and operational benefits of our partnership.

Step 3:

Experience the Progressive Difference.

Let's collaborate to launch an exceptional wraparound program that empowers your school and enriches your pupils' lives.



Our Partners

The **co-operative membership**
Central England Co-operative





Wraparound Care

More than just childcare



If you like to explore further and schedule a consultation, then please get in touch and a member of the team can help progress things.

a.holland@progressive-sports.co.uk

01332 869415

www.progressive-sports.co.uk/derbyshire